

# Hillsborough Township Public Schools



# Framework for Accountability

---

Lisa M. Antunes, Ed.D.  
Assistant Superintendent  
October 11, 2010

# What Does It All Mean?

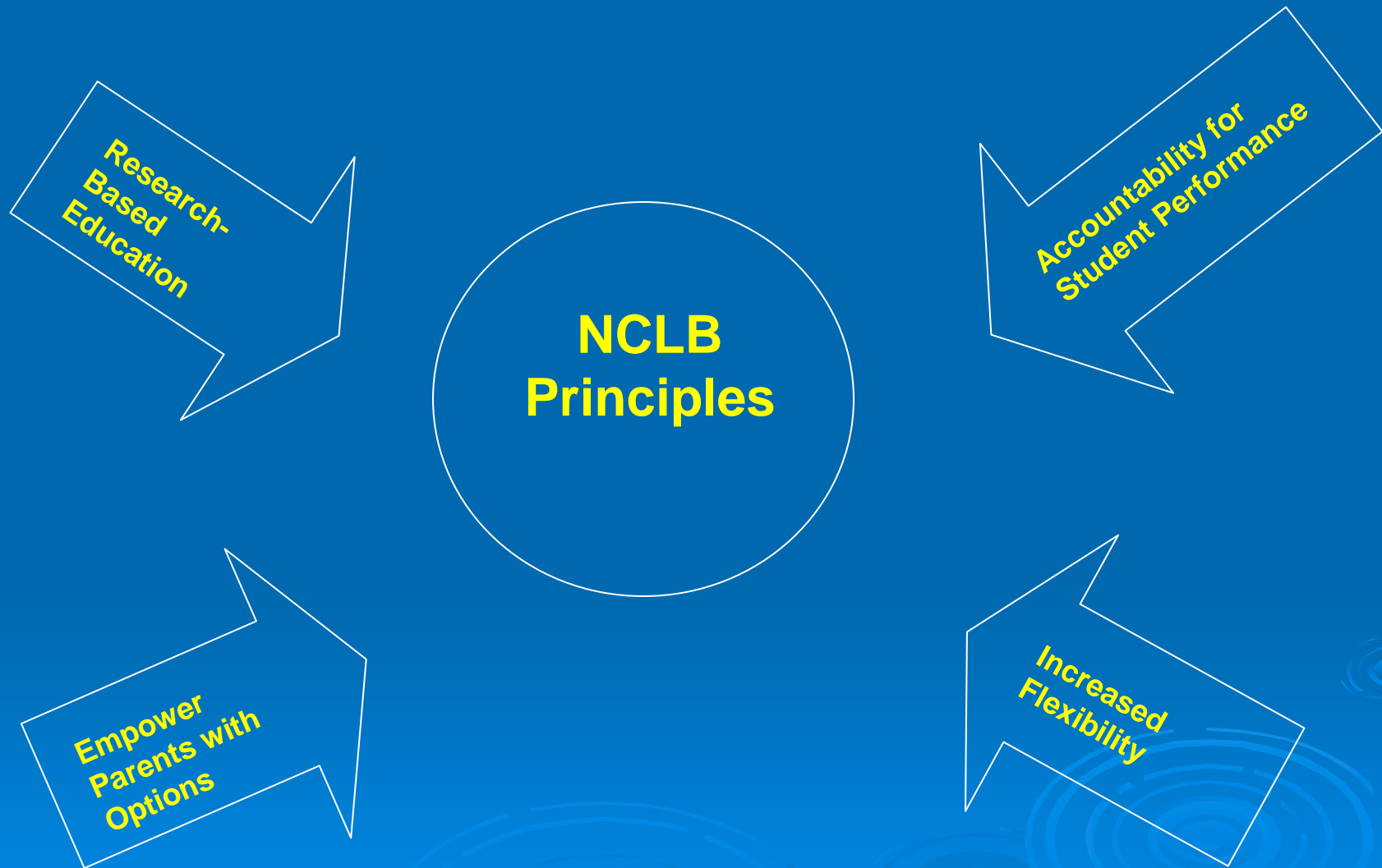
- **NCLB**                      **No Child Left Behind**
- **AYP**                        **Adequate Yearly Progress**
- **NJ ASK**                    **New Jersey Assessment of Skills and Knowledge**
- **HSPA**                      **High School Proficiency Assessment**
- **EOC**                        **End of Course Competency**
- **NJBCT**                    **New Jersey Biology Competency test**
- **APA**                        **Alternative Proficiency Assessment**
- **LEP**                        **Limited English Proficient**
- **IEP**                        **Individualized Education Plan**
- **AHSA**                      **Alternate High School Assessment**

# Background

***No Child Left Behind Act 2001 (NCLB)*** signed into law on January 8, 2002

This law represents some of the most significant changes to the **Elementary and Secondary Schools Act (ESEA)** since its enactment in 1965

# Introduction



# Guidelines for Assessing Students

**Goal: All students will be assessed**

- **95% of each student group must participate in the assessment process**
- **Students enrolled for <1 year will not be included in the accountability process**
- **Students with severe disabilities must be assessed utilizing the APA**
- **Out-of-district students are included in their home school's accountability process**
- **LEP students must also be assessed**

# **Adequate Yearly Progress (AYP)**

**Each state established their own definition of AYP to measure the yearly incremental progress of schools in reaching 100% proficiency by 2013-2014**

**States are required to raise standards once in the first two years, then every three years (2005, 2008, 2011, 2014)**

**All groups must attain 100% proficiency in language arts literacy, mathematics, and science by 2014**

# Adequate Yearly Progress (AYP) continued

**Student progress is also assessed by student groups:**

- **Racial/Ethnic: (White, Black, Asian, Pacific Islander, Hispanic, American Indian/Alaskan Native, Other)**
- **Income: (Economically Disadvantaged / Non-Economically Disadvantaged)**
- **LEP**
- **Special Education**

# New Jersey Benchmarks for AYP

Effective November 2009

Content Area	Grade Span	Starting Point 2003	2005 - 2007	2008 - 2010	2011 - 2013	2014
Language Arts Literacy	Elementary (Grades 3,4,5)	68	75	59	79	100
	Middle (Grades 6,7,8)	58	66	72	86	100
	High School (Grade 11)	73	79	85	92	100
Mathematics	Elementary (Grades 3,4,5)	53	62	66	83	100
	Middle (Grades 6,7,8)	39	49	61	80	100
	High School (Grade 11)	55	64	74	86	100

# School Level Accountability

- The proficiency statistics for each school will be compared to the statewide benchmarks in each area and for every student subgroup
- Results for subgroups with fewer than 30 students will be excluded from the analysis
- A misclassification rate of 5% will also be applied (error margin)
- If a subgroup is identified as not having met AYP, “safe harbor” may be reached

# Multiple Measures

**New Jersey also utilizes additional indicators of student performance in conjunction with statewide assessments:**

**Graduation rate- MS/HS levels**  
**Attendance rate- Elementary levels**

# Commissioner Davy's Letter

July 15, 2009

“ . . . setting new achievement standards in mathematics and language arts literacy for students taking the New Jersey Assessment of Skills and Knowledge (NJ ASK) in grades three and four. The action mirrors similar action the board took to establish higher achievement standards for the NJ ASK after new tests were administered last year to students in grades 5-8.

‘Setting these new standards is one part of our initiative to raise expectations for student achievement at all grade levels,’ said Commissioner of Education Lucille E. Davy.

Under the new standards, students must attain at least 50 percent of the possible points to attain proficiency. Previously, the proficiency cut points represented between 40 and 45 percent at these grade levels.

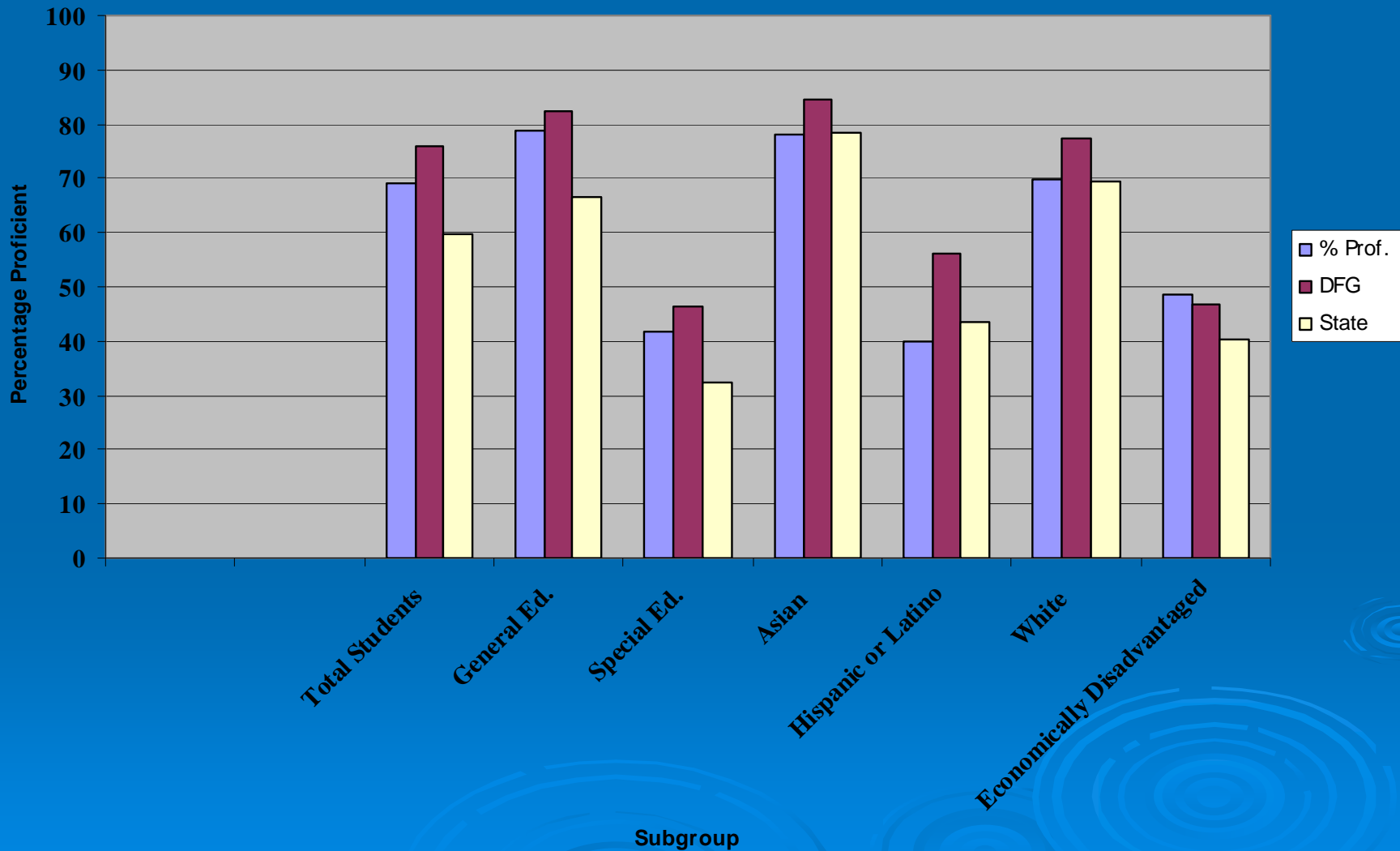
Commissioner Davy noted that more students will start out in the partially proficient category, a common occurrence in the first year of a testing program. ‘Our experience with state-administered tests has been that as educators and students become more familiar with the higher expectations, they adjust accordingly, and student performance increases over time,’ she said.”

# NJ ASK 3- Language Arts Literacy

TARGET= 59%

Subgroup	% Prof. 2005	% Prof. 2006	% Prof. 2007	% Prof. 2008	% Prof. 2009	% Prof. 2010	AYP Met	DFG	State
	75	75	75	82	82	82			
<b>Total Students</b>	<b>90.2</b>	<b>90.9</b>	<b>92.3</b>	<b>95.9</b>	<b>78.7</b>	<b>68.9</b>	<b>Y</b>	<b>75.9</b>	<b>59.7</b>
<b>General Ed.</b>	<b>95.9</b>	<b>96.7</b>	<b>95.8</b>	<b>98.4</b>	<b>86.4</b>	<b>78.7</b>	<b>Y</b>	<b>82.2</b>	<b>66.5</b>
<b>Special Ed.</b>	<b>74.3</b>	<b>67.3</b>	<b>76.7</b>	<b>85.6</b>	<b>39.5</b>	<b>41.6</b>	<b>N</b>	<b>46.3</b>	<b>32.5</b>
<b>LEP</b>	-	-	-	-	-	-	-	<b>46.5</b>	<b>33.1</b>
<b>American Indian/ AK Native</b>	-	-	-	-	-	-	-	<b>86.6</b>	<b>62.7</b>
<b>Asian</b>	<b>98.2</b>	<b>95.6</b>	<b>95.2</b>	<b>94.5</b>	<b>87.8</b>	<b>77.9</b>	<b>Y</b>	<b>84.5</b>	<b>78.5</b>
<b>Black or African American</b>	<b>91.7</b>	<b>85.2</b>	<b>82.9</b>	<b>90.3</b>	-	-	-	<b>54.6</b>	<b>40.2</b>
<b>Hispanic or Latino</b>	<b>51.3</b>	<b>89.3</b>	<b>77.2</b>	<b>94.1</b>	<b>65.7</b>	<b>40.0</b>	<b>N</b>	<b>56.2</b>	<b>43.6</b>
<b>Pacific Islander</b>	-	-	-	-	-	-	-	<b>66.6</b>	<b>67.4</b>
<b>White</b>	<b>92.5</b>	<b>90.8</b>	<b>93.9</b>	<b>96.7</b>	<b>78.4</b>	<b>69.9</b>	<b>Y</b>	<b>77.2</b>	<b>69.3</b>
<b>Other</b>	-	-	-	-	-	-	-	<b>78.6</b>	<b>58.6</b>
<b>Economically Disadvantaged</b>	<b>47.9</b>	<b>80.6</b>	<b>80.6</b>	<b>88.9</b>	-	<b>48.6</b>	<b>N</b>	<b>46.6</b>	<b>40.2</b>

# NJ ASK 3 LAL Comparison

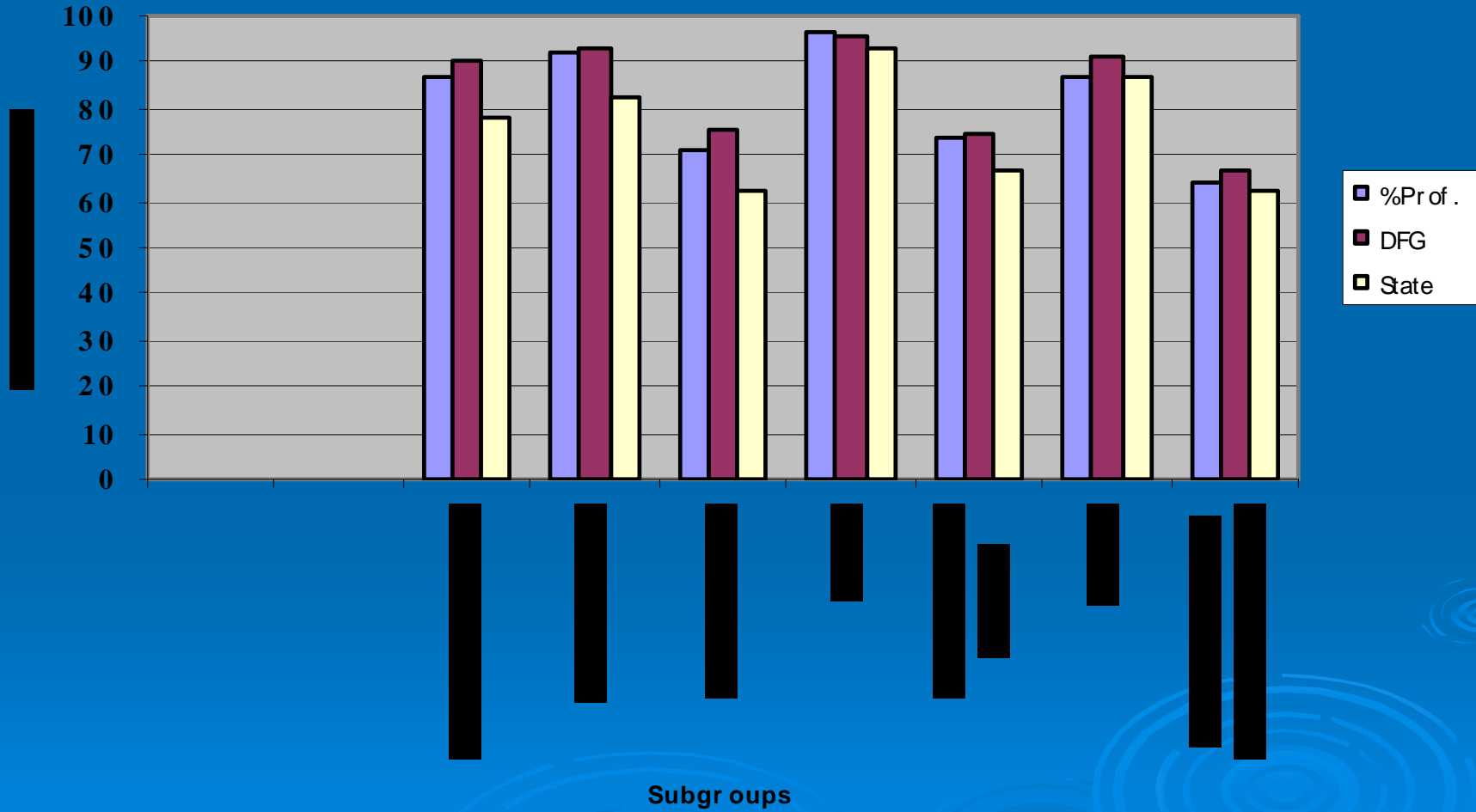


# NJ ASK 3- Mathematics

TARGET = 66%

Subgroup	% Prof. 2005 62	% Prof. 2006 62	% Prof. 2007 62	% Prof. 2008 73	% Prof. 2009 73	% Prof. 2010 73	AYP Met	DFG	State
Total Students	88.9	93.8	96.2	95.6	88.9	86.5	Y	90.0	78.1
General Ed.	92.2	95.6	98.1	97.0	93.0	92.4	Y	93.2	82.6
Special Ed.	78.5	86.8	90.7	89.8	67.8	71.2	Y	75.4	62.5
LEP	-	-	-	-	-	-	-	73.0	56.9
American Indian/ AK Native	-	-	-	-	-	-	-	100.0	78.4
Asian	96.4	100	98.5	95.9	93.4	96.6	Y	95.6	92.6
Black or African American	62.5	85.2	80.0	87.1	-	-	-	69.7	58.0
Hispanic or Latino	72.5	82.1	85.7	94.1	75.0	73.4	Y	75.0	66.3
Pacific Islander	-	-	-	-	-	-	-	88.1	88.1
White	90.7	94.3	98.3	96.5	90.2	87.1	Y	91.3	87.0
Other	-	-	-	-	-	-	-	91.6	73.2
Economically Disadvantaged	63.0	80.6	77.8	-	-	63.9	N	66.8	62.6

# NJASK 3 Math Comparison

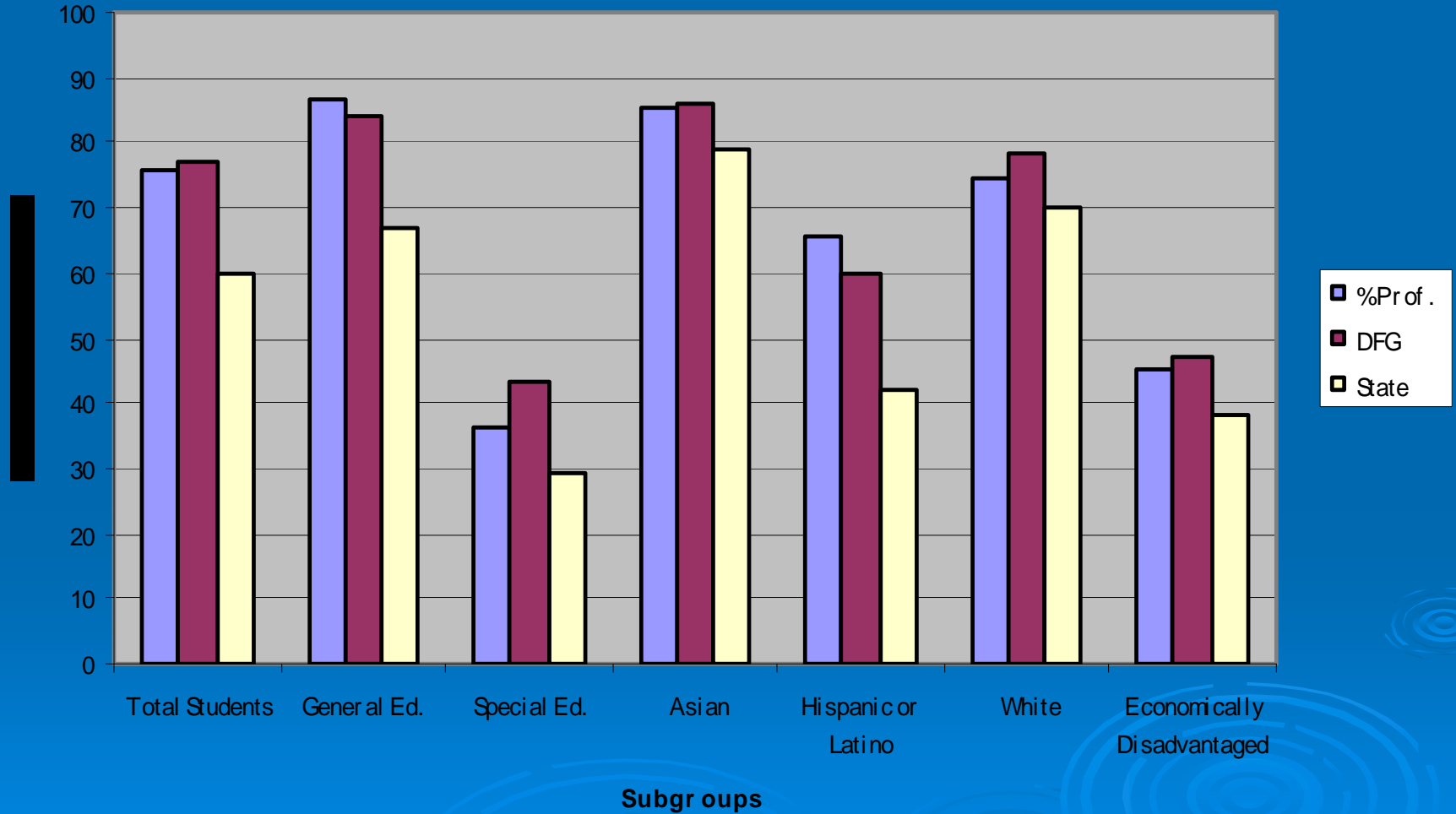


# NJ ASK 4- Language Arts Literacy

TARGET = 59%

Subgroup	% Prof. 2005	% Prof. 2006	% Prof. 2007	% Prof. 2008	% Prof. 2009	% Prof. 2010	AYP Met	DFG	State
	75	75	75	82	82	82			
<b>Total Students</b>	<b>90.2</b>	<b>91.7</b>	<b>92.1</b>	<b>94.8</b>	<b>81.0</b>	<b>75.7</b>	<b>Y</b>	<b>77.1</b>	<b>59.6</b>
<b>General Ed.</b>	<b>97.8</b>	<b>96.4</b>	<b>97.2</b>	<b>97.7</b>	<b>86.9</b>	<b>86.4</b>	<b>Y</b>	<b>83.8</b>	<b>66.9</b>
<b>Special Ed.</b>	<b>63.6</b>	<b>73.9</b>	<b>68.0</b>	<b>83.0</b>	<b>51.8</b>	<b>36.0</b>	<b>N</b>	<b>43.5</b>	<b>29.4</b>
<b>LEP</b>	-	-	-	-	-	-	-	<b>50.1</b>	<b>28.2</b>
<b>American Indian/ AK Native</b>	-	-	-	-	-	-	-	<b>71.4</b>	<b>56.0</b>
<b>Asian</b>	<b>95.0</b>	<b>100</b>	<b>98.6</b>	<b>94.3</b>	<b>90.1</b>	<b>85.1</b>	<b>Y</b>	<b>86.3</b>	<b>79.0</b>
<b>Black or African American</b>	<b>76.0</b>	<b>91.3</b>	<b>77.3</b>	<b>81.1</b>	-	-	-	<b>56.2</b>	<b>38.2</b>
<b>Hispanic or Latino</b>	<b>71.5</b>	<b>73.8</b>	<b>93.1</b>	<b>91.9</b>	<b>63.9</b>	<b>65.7</b>	<b>Y-</b>	<b>60.0</b>	<b>41.9</b>
<b>Pacific Islander</b>	-	-	-	-	-	-	-	<b>72.7</b>	<b>71.2</b>
<b>White</b>	<b>91.2</b>	<b>92.2</b>	<b>91.9</b>	<b>96.3</b>	<b>82.5</b>	<b>74.6</b>	<b>Y</b>	<b>78.1</b>	<b>70.2</b>
<b>Other</b>	-	-	-	-	-	-	-	<b>71.5</b>	<b>57.9</b>
<b>Economically Disadvantaged</b>	<b>73.1</b>	<b>69.0</b>	<b>87.1</b>	<b>88.1</b>	-	<b>45.5</b>	<b>N</b>	<b>47.1</b>	<b>38.4</b>

# NJASK 4 LAL Comparison

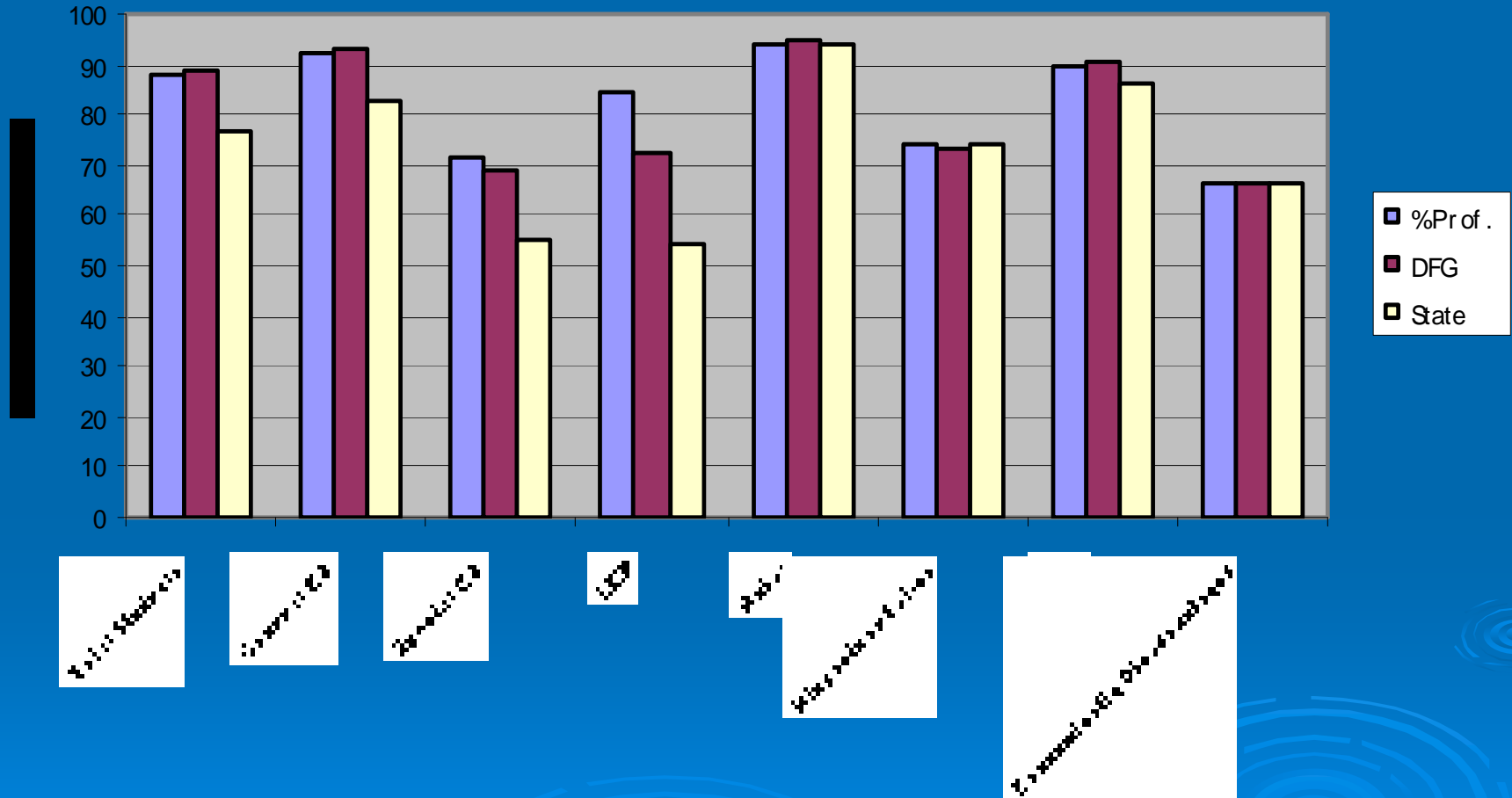


# NJ ASK 4- Mathematics

TARGET = 66%

Subgroup	% Prof. 2005 62	% Prof. 2006 62	% Prof. 2007 62	% Prof. 2008 73	% Prof. 2009 73	% Prof. 2010 73	AYP Met	DFG	State
<b>Total Students</b>	<b>87.6</b>	<b>90.3</b>	<b>96.2</b>	<b>95.3</b>	<b>85.5</b>	<b>88.1</b>	<b>Y</b>	<b>88.9</b>	<b>77.0</b>
<b>General Ed.</b>	<b>93.8</b>	<b>96.2</b>	<b>98.8</b>	<b>97.3</b>	<b>89.0</b>	<b>92.6</b>	<b>Y</b>	<b>93.1</b>	<b>82.5</b>
<b>Special Ed.</b>	<b>68.2</b>	<b>67.5</b>	<b>84.0</b>	<b>89.4</b>	<b>68.3</b>	<b>71.8</b>	<b>Y</b>	<b>68.8</b>	<b>55.4</b>
<b>LEP</b>	-	-	-	-	-	<b>84.6</b>	<b>Y</b>	<b>72.6</b>	<b>54.1</b>
<b>American Indian/AK Native</b>	-	-	-	-	-	-	-	<b>85.7</b>	<b>72.3</b>
<b>Asian</b>	<b>94.8</b>	<b>100</b>	<b>98.6</b>	<b>94.4</b>	<b>88.8</b>	<b>93.6</b>	<b>Y</b>	<b>94.7</b>	<b>93.6</b>
<b>Black or African American</b>	<b>64.0</b>	<b>86.9</b>	<b>91.3</b>	<b>83.8</b>	-	-	-	<b>68.3</b>	<b>72.4</b>
<b>Hispanic or Latino</b>	<b>76.1</b>	<b>66.7</b>	<b>93.1</b>	<b>86.5</b>	<b>72.7</b>	<b>74.3</b>	<b>Y</b>	<b>72.9</b>	<b>74.3</b>
<b>Pacific Islander</b>	-	-	-	-	-	-	-	<b>87.0</b>	<b>100.0</b>
<b>White</b>	<b>88.8</b>	<b>91.2</b>	<b>96.4</b>	<b>97.2</b>	<b>88.2</b>	<b>89.3</b>	<b>Y</b>	<b>90.4</b>	<b>85.9</b>
<b>Other</b>	-	-	-	-	-	-	-	<b>80.3</b>	<b>70.9</b>
<b>Economically Disadvantaged</b>	<b>80.8</b>	<b>51.7</b>	<b>90.4</b>	<b>88.1</b>	-	<b>66.7</b>	<b>Y</b>	<b>66.1</b>	<b>66.7</b>

# NJASK 4 Math Comparison



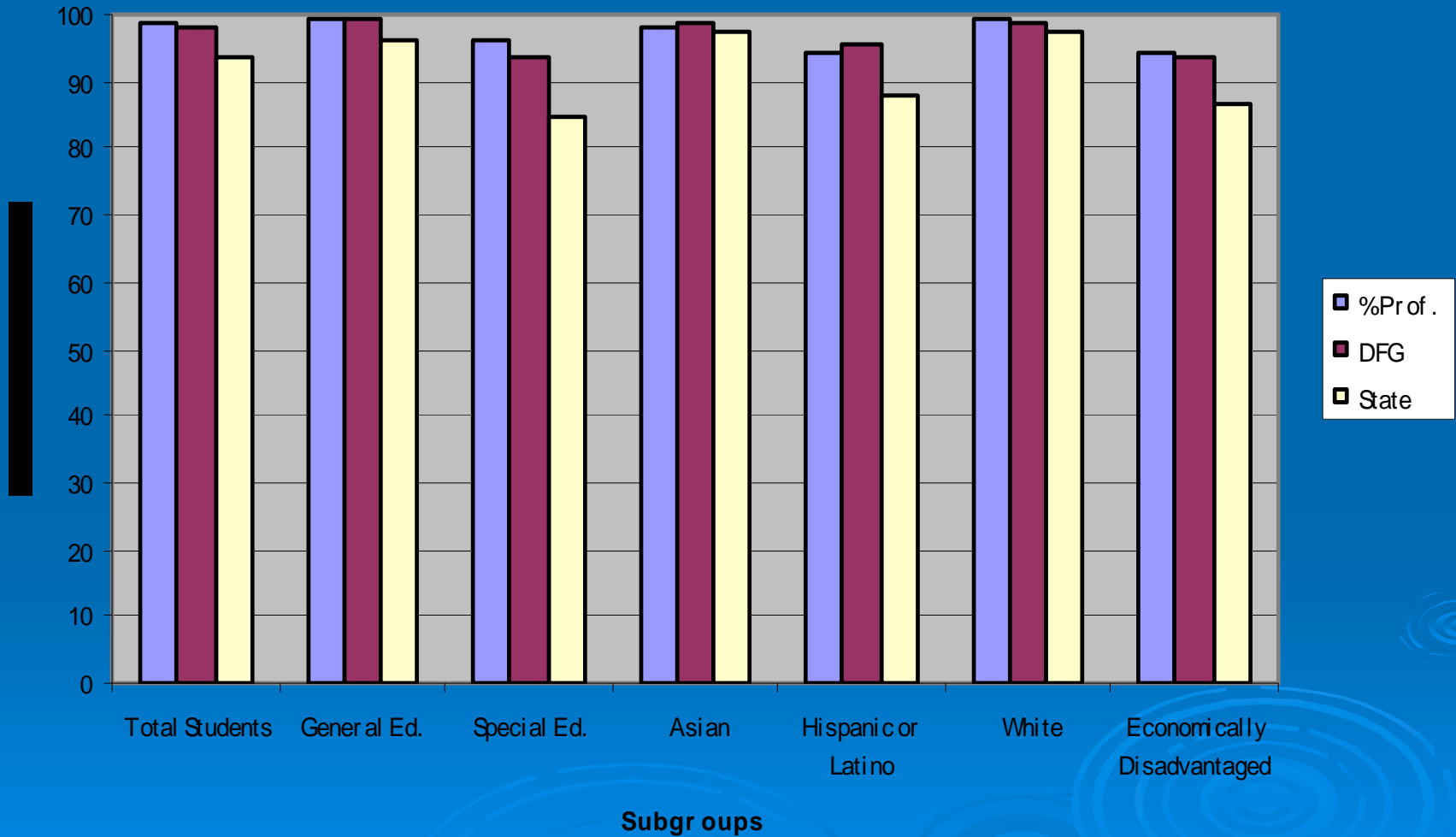
Subgroups

# NJ ASK 4- Science

TARGET = ?

Subgroup	% Prof. 2006	% Prof. 2007	% Prof. 2008	% Prof. 2009	% Prof. 2010	AYP Met	DFG	State
Total Students	91.9	94.4	95.9	97.8	98.8		98.3	93.4
General Ed.	94.8	97.2	97.5	99.1	99.6		99.3	96.0
Special Ed.	83.3	81.1	90.4	91.7	96.4		93.6	84.8
LEP	-	-	-	-	-		91.9	77.8
American Indian/AK Native	-	-	-	-	-		100.0	94.5
Asian	98.5	98.6	93.0	98.8	97.8		98.9	97.3
Black or African American	87.0	82.6	89.2	-	-		94.7	84.8
Hispanic or Latino	69.0	82.7	83.8	91.7	94.3		95.5	88.2
Pacific Islander	-	-	-	-	-		91.3	96.8
White	93.3	95.3	97.9	98.5	99.5		98.6	97.6
Other	-	-	-	-	-		95.3	91.9
Economically Disadvantaged	65.5	87.1	87.8	-	94.0		93.8	86.6

# NJASK 4 Science

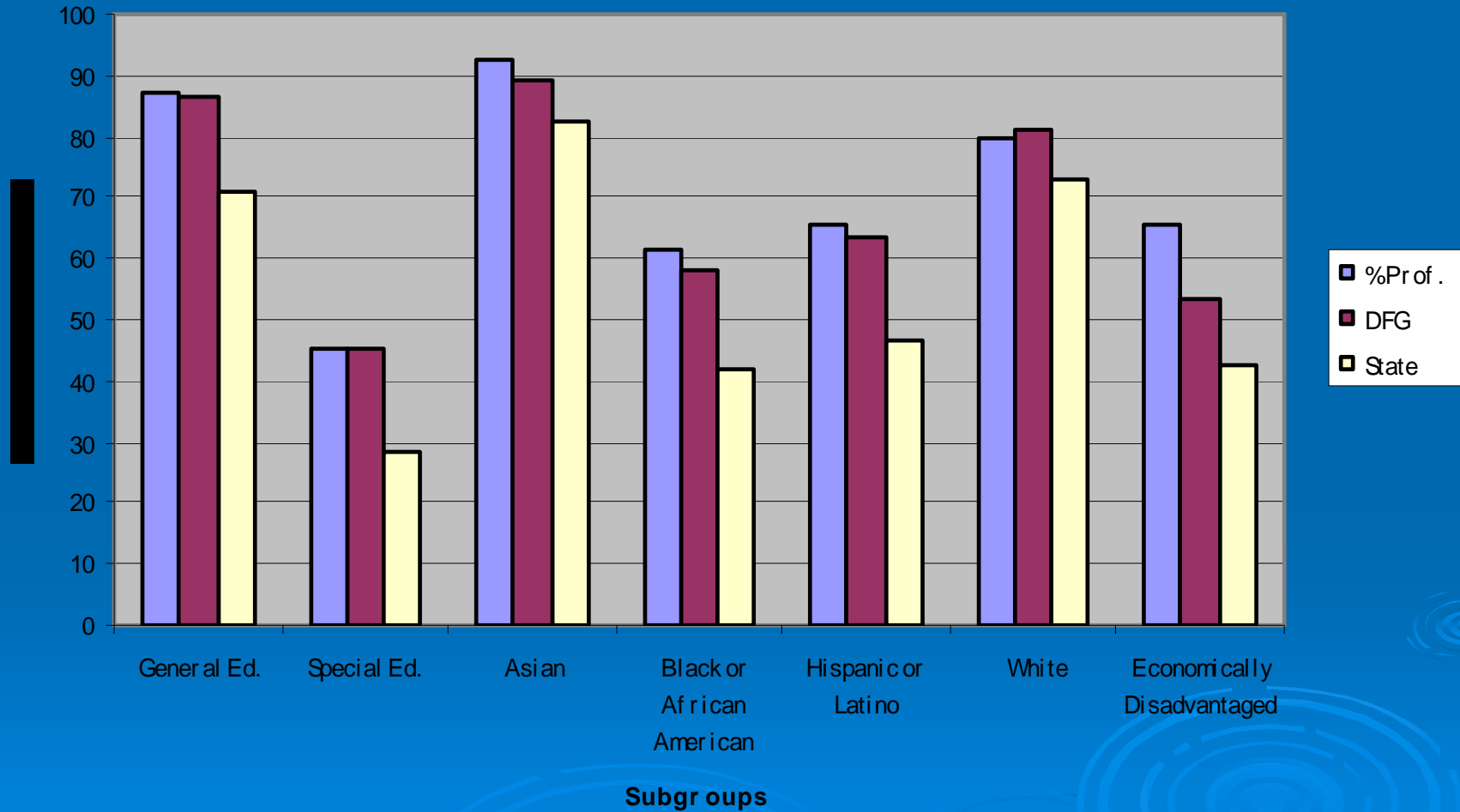


# NJ ASK 5- Language Arts Literacy

TARGET = 59%

Subgroup	% Prof. 2008 82	% Prof. 2009 82	% Prof. 2010 82	AYP Met	DFG	State
Total Students	77.0	79.2	79.4	Y	80.0	63.0
General Ed.	85.3	86.4	86.9	Y	86.6	70.9
Special Ed.	28.6	33.8	45.3	N	45.0	28.7
LEP	-	-	-	-	55.8	29.6
American Indian/AK Native	-	-	-	-	58.8	51.5
Asian	87.7	81.0	92.7	Y	89.4	82.5
Black or African American	-	47.0	61.3	Y	57.9	41.7
Hispanic or Latino	-	61.1	65.8	Y	63.4	46.9
Pacific Islander	-	-	-	-	86.7	72.5
White	77.0	82.7	79.5	Y	81.1	73.1
Other	-	-	-	-	76.3	57.5
Economically Disadvantaged	51.5	45.9	65.8	Y	53.1	42.8

# NJASK 5 LAL Comparison

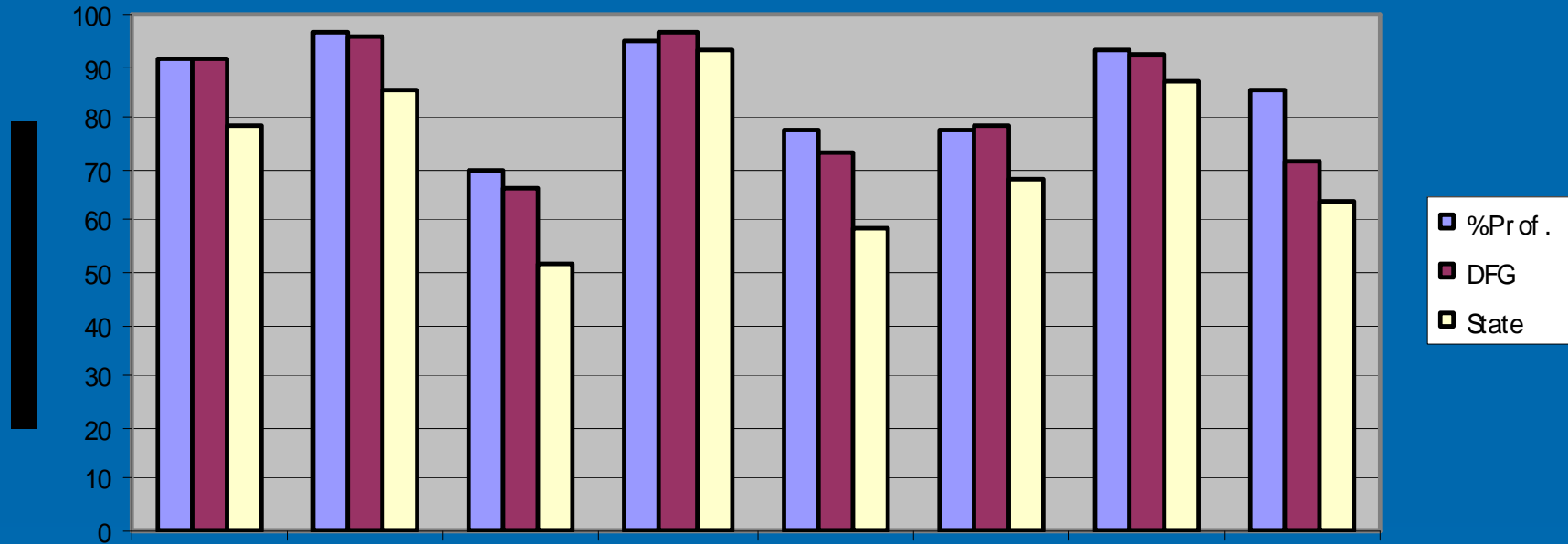


# NJ ASK 5- Mathematics

TARGET = 66%

Subgroup	% Prof. 2008 73	% Prof. 2009 73	% Prof. 2010 73	AYP Met	DFG	State
Total Students	77.0	90.0	91.4	Y	91.1	78.8
General Ed.	85.3	96.0	96.5	Y	95.7	85.2
Special Ed.	28.6	58.5	70.1	Y	66.7	51.3
LEP	-	-	-	-	74.4	53.9
American Indian/AK Native	-	-	-	-	82.4	72.4
Asian	87.7	93.8	95.2	Y	96.7	93.5
Black or African American	64.0	65.8	77.5	Y	73.4	58.3
Hispanic or Latino	-	81.1	77.5	Y	78.5	67.9
Pacific Islander	-	-	-	-	96.6	85.0
White	77.0	92.1	93.2	Y	92.2	87.1
Other	-	-	-	-	87.7	73.4
Economically Disadvantaged	51.5	61.2	85.7	Y	71.3	63.5

# NJASK 5 Math Comparison



100% Proficiency

90% Proficiency

80% Proficiency

70% Proficiency

60% Proficiency

50% Proficiency

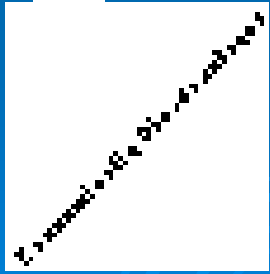
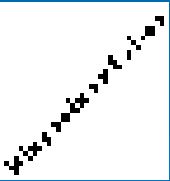
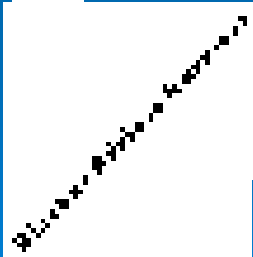
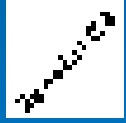
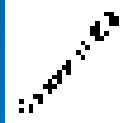
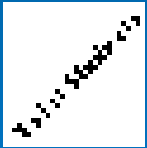
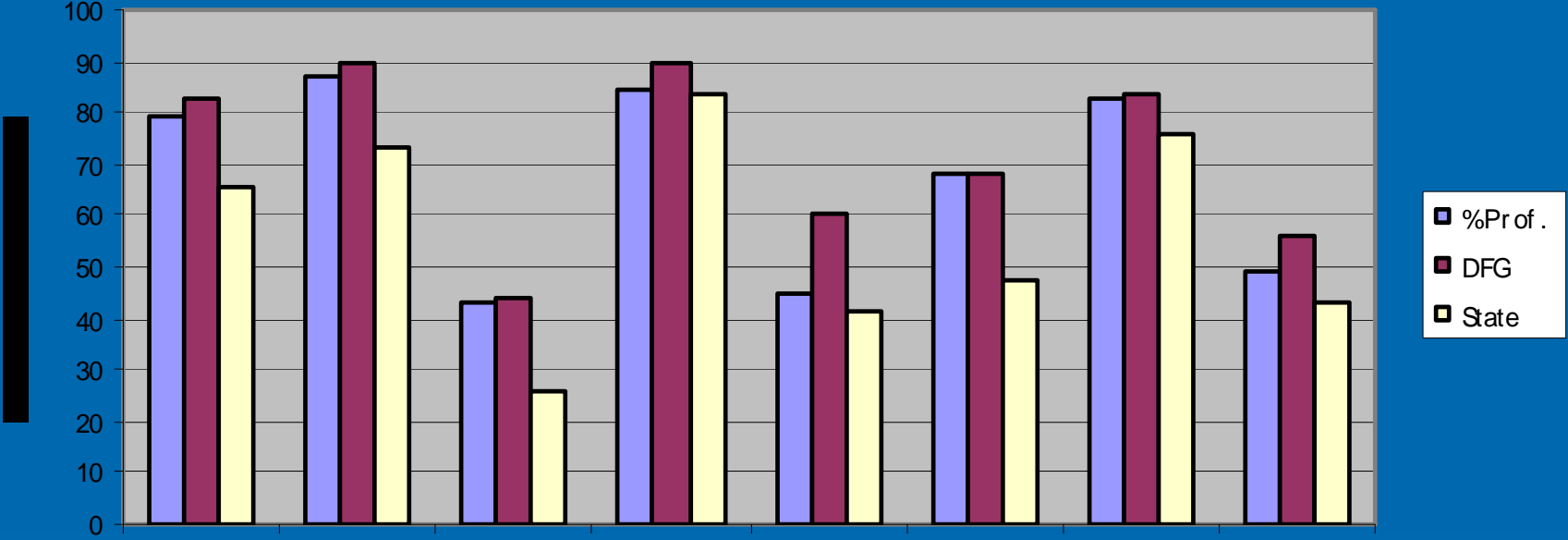
Subgroups

# NJ ASK 6- Language Arts Literacy

TARGET = 72%

Subgroup	% Prof. 2008 76	% Prof. 2009 76	% Prof. 2010 76	AYP Met	DFG	State
Total Students	80.5	87.0	79.6	Y	82.5	65.3
General Ed.	90.1	94.7	87.1	Y	89.4	73.7
Special Ed.	40.8	41.2	43.0	N	43.9	26.0
LEP	-	-	-	-	41.6	24.5
American Indian/ AK Native	-	-	-	-	87.5	56.1
Asian	94.3	96.6	84.1	Y	89.3	84.0
Black or African American	-	82.4	44.7	N	60.7	41.4
Hispanic or Latino	54.5	-	68.4	N	68.0	47.7
Pacific Islander	-	-	-	-	86.7	77.1
White	81.5	86.3	82.8	Y	83.8	76.2
Other	-	-	-	-	85.0	57.8
Economically Disadvantaged	56.8	-	49.1	N	55.8	43.4

# NJASK 6 LAL Comparison



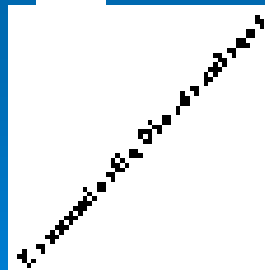
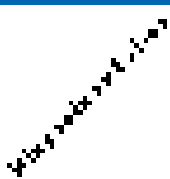
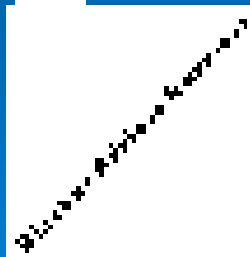
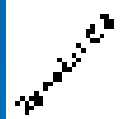
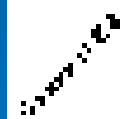
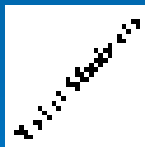
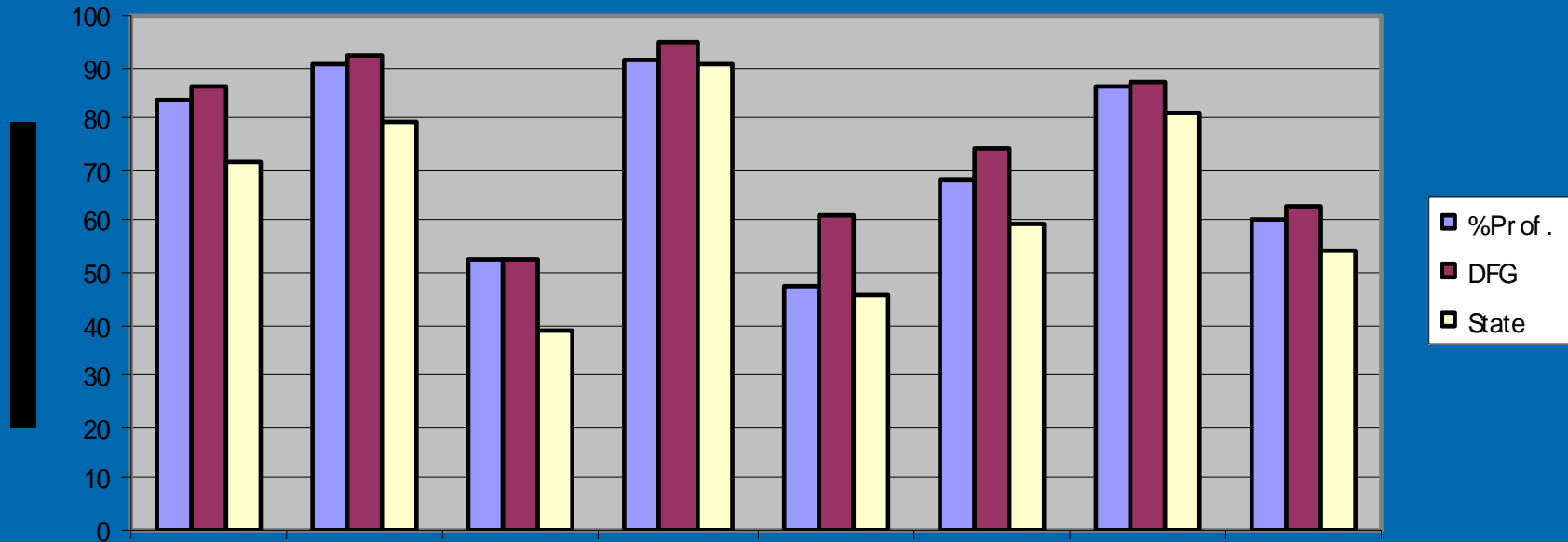
Subgroups

# NJ ASK 6- Mathematics

TARGET = 61%

Subgroup	% Prof. 2008 62	% Prof. 2009 62	% Prof. 2010 62	AYP Met	DFG	State
Total Students	86.3	87.9	83.6	Y	86.1	71.8
General Ed.	94.8	93.9	90.2	Y	91.9	79.1
Special Ed.	52.6	55.3	52.3	N	52.7	38.4
LEP	-	-	-	-	66.1	42.4
American Indian/AK Native	-	-	-	-	87.5	64.7
Asian	95.9	94.4	91.4	Y	94.8	90.2
Black or African American	-	70.6	47.4	N	61.2	46.0
Hispanic or Latino	59.1	-	68.4	Y	73.8	59.7
Pacific Islander	-	-	-	-	93.4	85.4
White	87.8	89.1	86.6	Y	87.1	81.3
Other	-	-	-	-	85.2	58.9
Economically Disadvantaged	62.1	63.4	60.0	N	62.7	54.1

# NJASK 6 Math Comparison



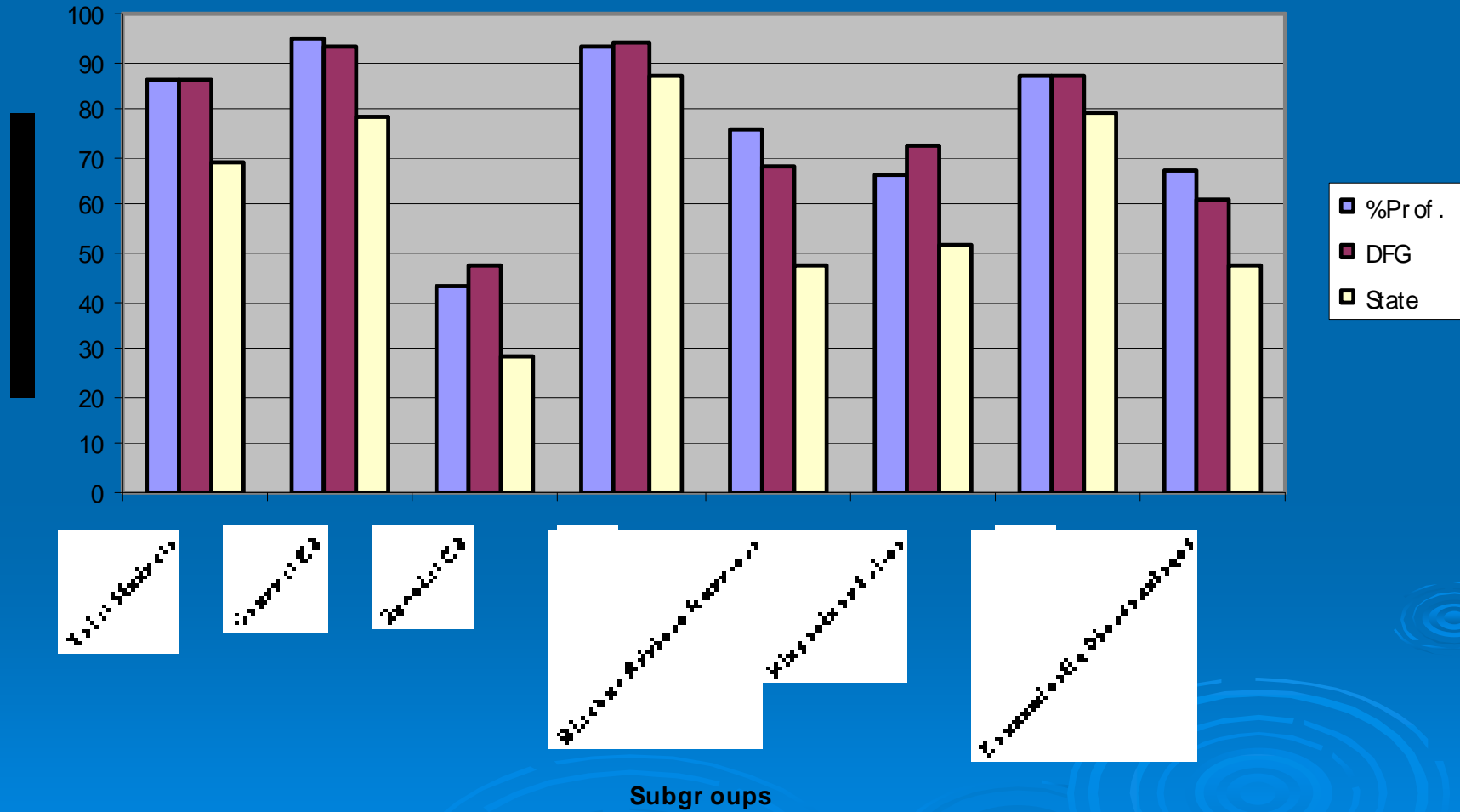
Subgroups

# NJ ASK 7- Language Arts Literacy

TARGET = 72%

Subgroup	% Prof. 2008 76	% Prof. 2009 76	% Prof. 2010 76	AYP Met	DFG	State
Total Students	87.4	86.5	86.4	Y	86.1	69.2
General Ed.	96.0	94.8	94.5	Y	92.7	78.1
Special Ed.	46.4	52.2	42.9	N	47.7	28.7
LEP	-	-	-	-	52.0	24.2
American Indian/AK Native	-	-	-	-	82.3	62.6
Asian	87.7	94.9	93.2	Y	94.0	87.2
Black or African American	-	-	75.7	Y	67.8	47.0
Hispanic or Latino	73.7	65.9	66.7	N	72.5	52.0
Pacific Islander	-	-	-	-	94.1	80.4
White	89.5	88.1	87.2	Y	87.2	79.5
Other	-	-	-	-	83.1	58.1
Economically Disadvantaged	75.6	68.2	67.6	N	60.8	47.8

# NJASK 7 LAL Comparison

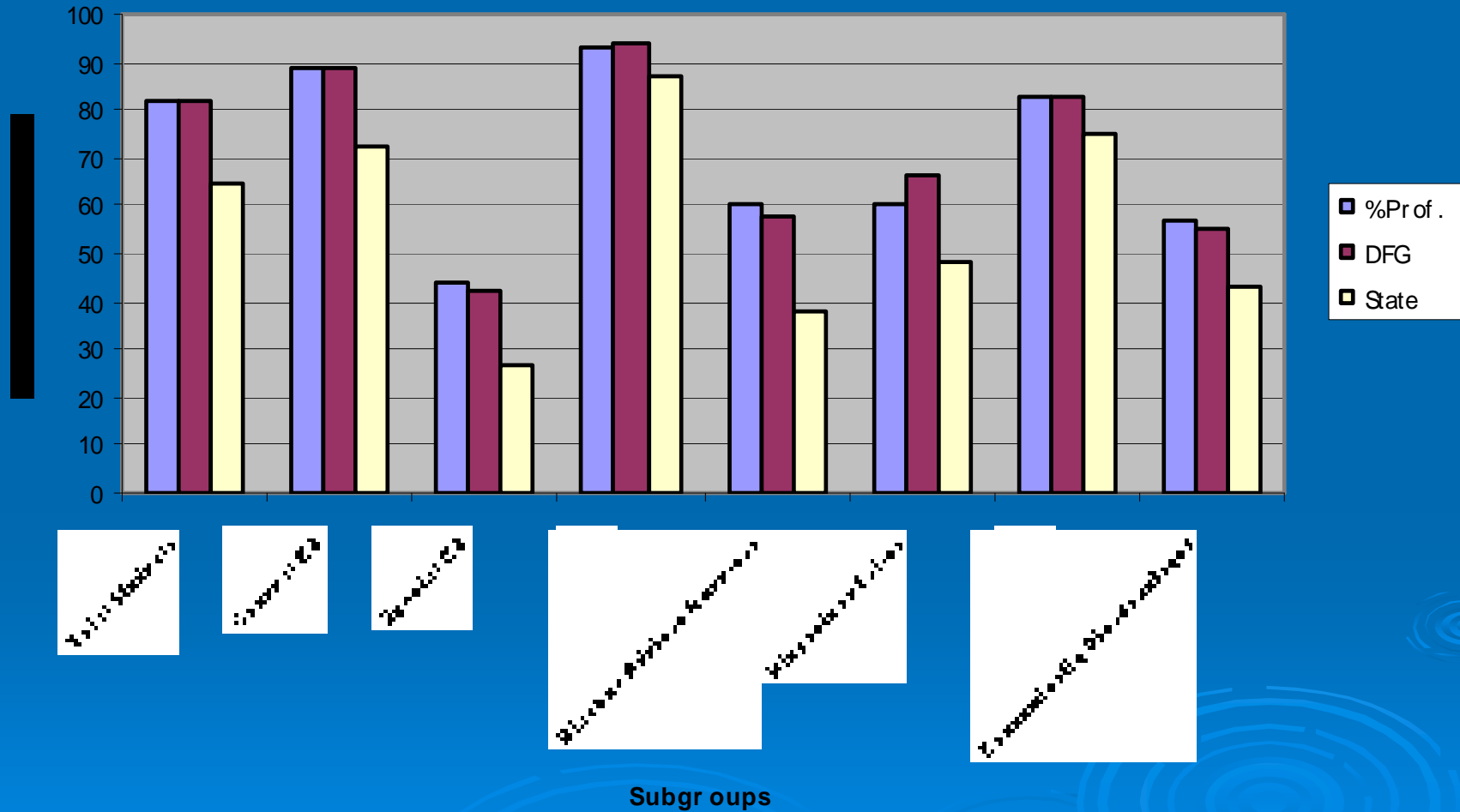


# NJ ASK 7- Mathematics

TARGET = 61%

Subgroup	% Prof. 2008 62	% Prof. 2009 62	% Prof. 2010 62	AYP Met	DFG	State
Total Students	81.0	78.1	82.0	Y	81.9	64.3
General Ed.	90.2	88.5	89.1	Y	88.6	72.5
Special Ed.	38.4	35.7	44.1	N	42.1	26.4
LEP	28.6	-	-	-	61.9	29.3
American Indian/AK Native	-	-	-	-	88.2	62.6
Asian	84.0	94.9	93.1	Y	94.2	87.4
Black or African American	68.9	-	60.6	N	57.8	37.7
Hispanic or Latino	56.1	47.7	60.0	N	66.2	48.3
Pacific Islander	-	-	-	-	94.1	78.0
White	83.6	79.7	83.0	Y	82.8	74.8
Other	-	-	-	-	77.6	48.0
Economically Disadvantaged	67.4	48.2	56.7	N	54.8	43.5

# NJASK 7 Math Comparison



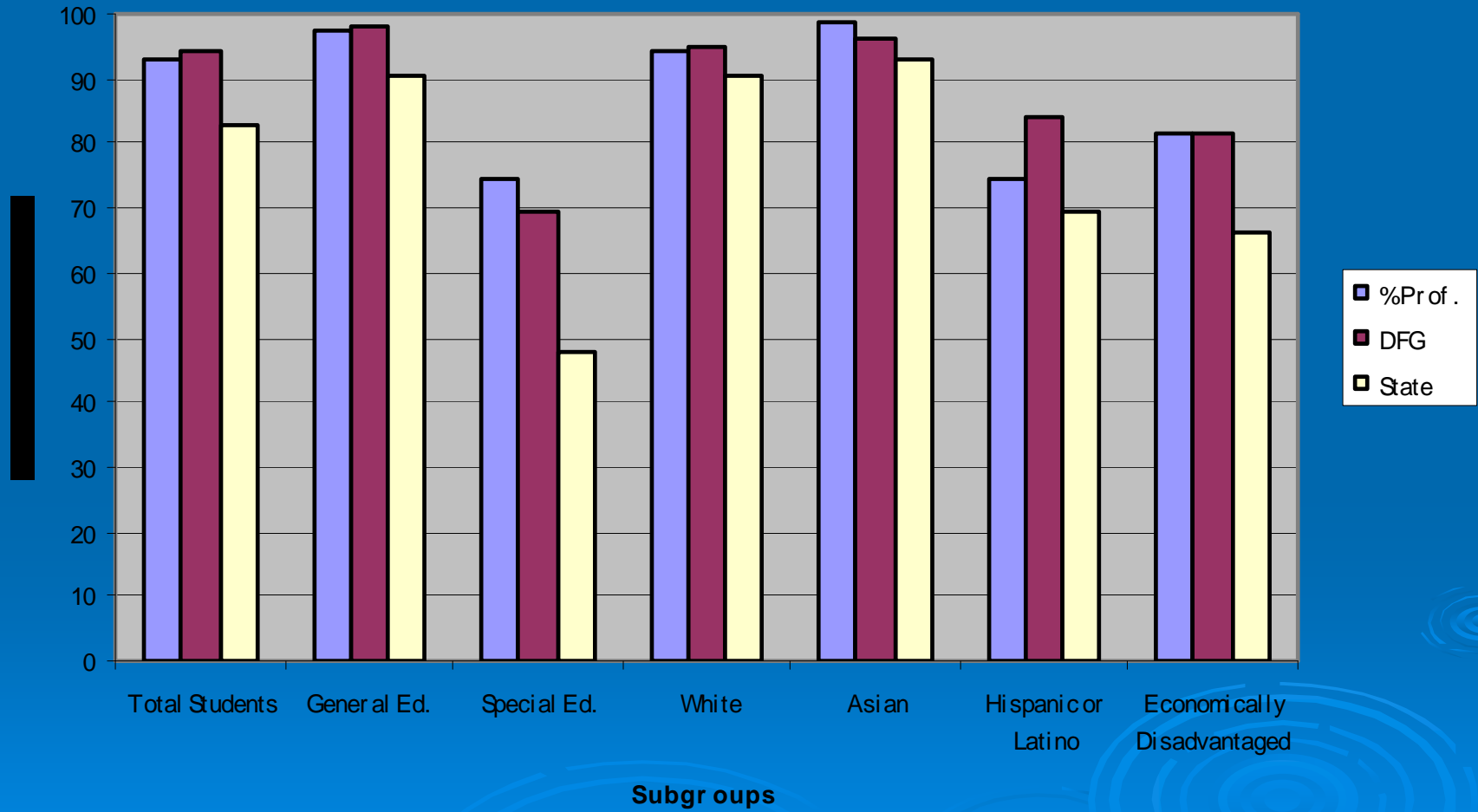
Subgroups

# NJ ASK 8 - Language Arts Literacy

TARGET = 72%

Subgroup	% Prof. 2008 76	% Prof. 2009 76	% Prof. 2010 76	AYP Met	DFG	State
Total Students	93.8	93.8	93.2	Y	94.0	82.5
General Ed.	98.9	99.6	97.7	Y	98.2	90.6
Special Ed.	67.7	66.3	74.8	Y	69.6	47.7
LEP	-	-	-	-	60.0	38.9
White	94.7	94.9	94.4	Y	95.0	90.7
Black or African American	84.4	85.7	-	-	83.6	64.8
Asian	97.2	94.4	98.7	Y	96.4	93.3
Pacific Islander	-	-	-	-	100.0	91.8
Hispanic or Latino	82.9	85.7	74.4	Y	84.1	69.3
American Indian/AK Native	-	-	-	-	93.8	81.3
Other	-	-	-	-	90.9	72.0
Economically Disadvantaged	80.0	78.0	81.6	Y	81.6	66.0

# NJASK 8 LAL Comparison

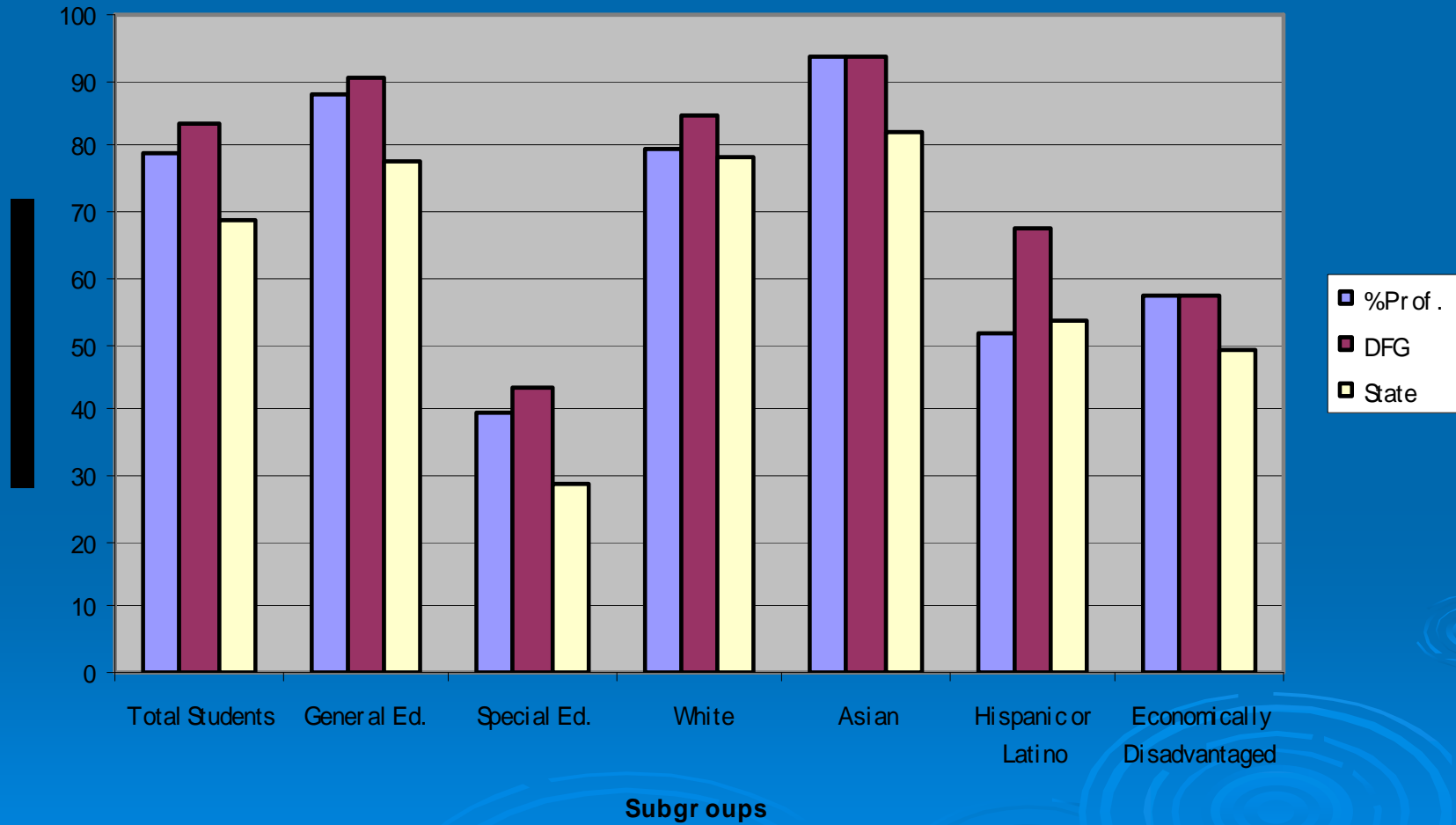


# NJASK 8 - Mathematics

TARGET = 61%

Subgroup	% Prof. 2008 62	% Prof. 2009 62	% Prof. 2010 62	AYP Met	DFG	State
Total Students	79.0	84.3	79.1	Y	83.6	68.5
General Ed.	86.6	92.3	88.2	Y	90.3	77.4
Special Ed.	40.2	43.5	39.6	N	43.0	28.7
LEP	-	-	-	-	63.1	35.9
White	81.0	87.1	79.9	Y	84.8	78.5
Black or African American	68.7	-	-	-	58.5	42.5
Asian	85.4	88.9	93.5	Y	93.8	81.9
Pacific Islander/AK Native	-	-	-	-	100.0	78.3
Hispanic or Latino	50.0	57.2	51.3	N	67.4	53.7
American Indian	-	-	-	-	75.0	65.5
Other	-	-	-	-	80.0	55.9
Economically Disadvantaged	56.1	58.6	57.2	N	57.6	49.0

# NJASK 8 Math Comparison

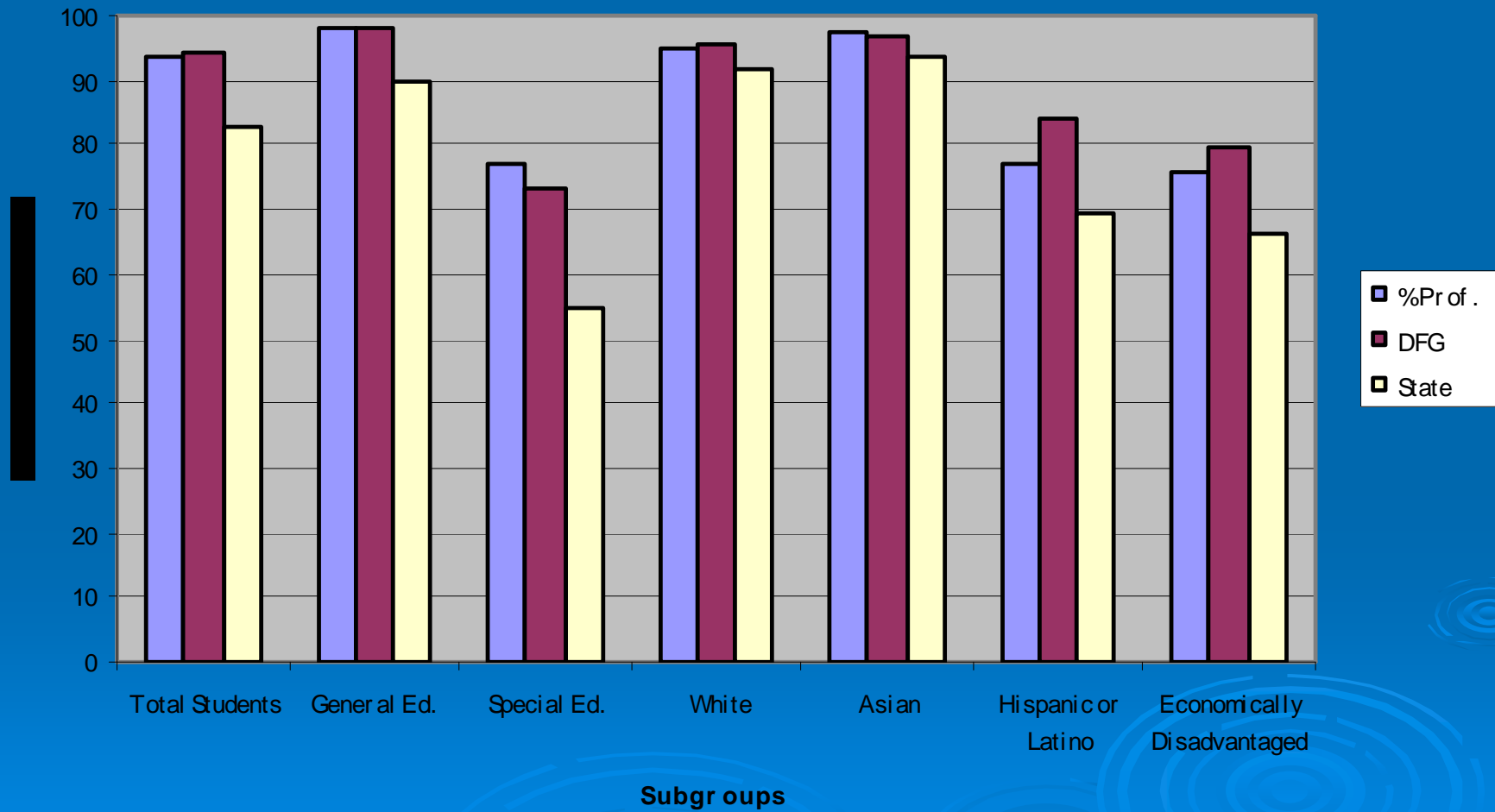


# NJASK 8 - Science

TARGET = ?

Subgroup	% Prof. 2008	% Prof. 2009	% Prof. 2010	DFG	State
Total Students	95.8	94.2	93.6	94.2	82.9
General Ed.	98.7	99.6	97.8	97.8	89.8
Special Ed.	84.9	70.7	77.3	73.1	54.6
LEP	-	-	-	67.7	42.4
White	97.0	95.7	94.8	95.3	91.7
Black or African American	96.9	-	-	81.1	64.0
Asian	93.3	92.6	97.4	96.9	93.4
Pacific Islander	-	-	-	100.0	89.2
Hispanic or Latino	83.3	92.9	76.9	84.2	69.4
American Indian/AK Native	-	-	-	93.8	82.5
Other	-	-	-	94.0	73.8
Economically Disadvantaged	78.1	75.6	75.5	79.3	66.2

# NJASK 8 Science Comparison

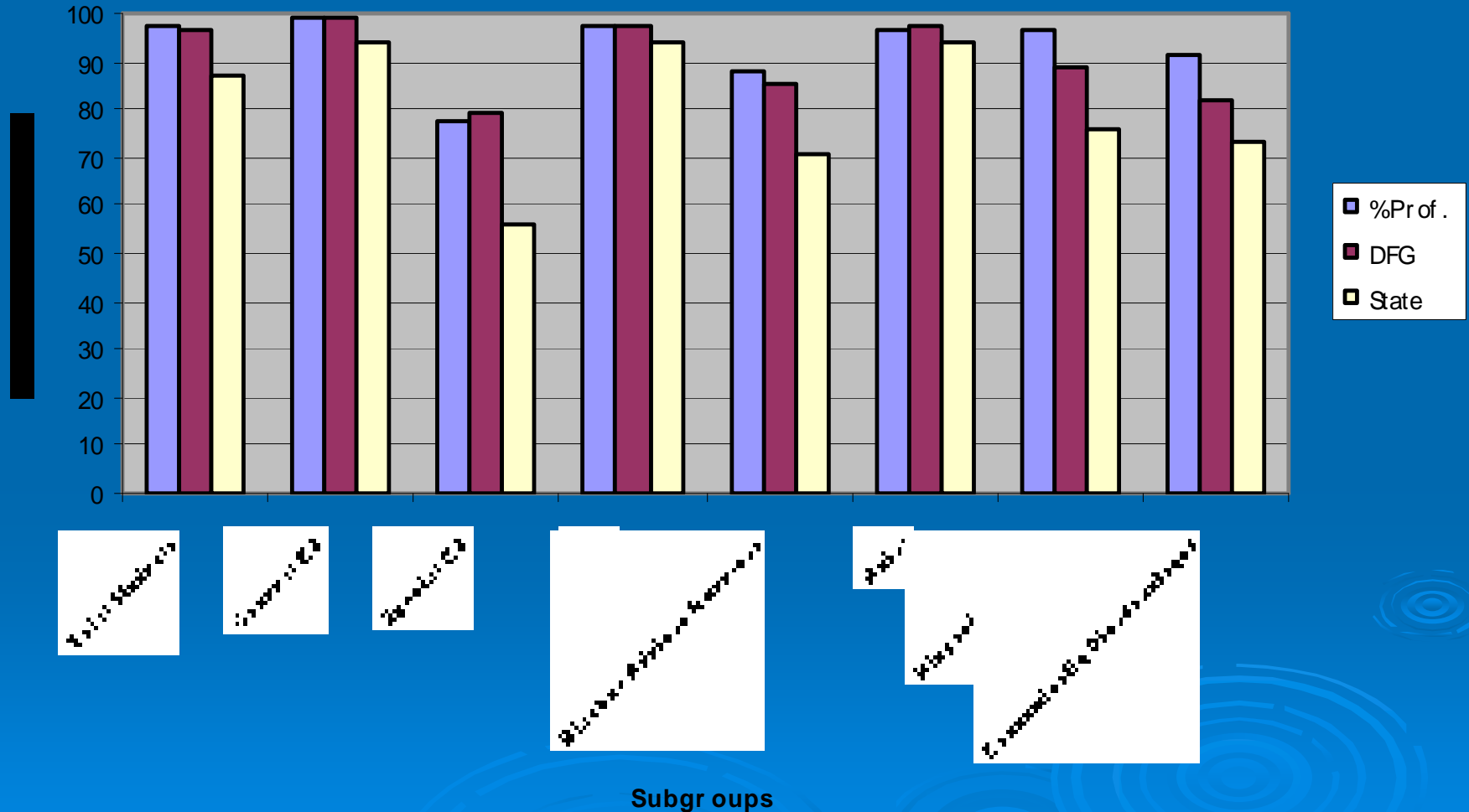


# HSPA- Language Arts Literacy

TARGET = 85%

Subgroup	% Prof. 2005	% Prof. 2006	% Prof. 2007	% Prof. 2008	% Prof. 2009	% Prof. 2010	AYP Met	DFG	State
Total Students	95.5	93.6	96.5	94.9	94.1	97.0	Y	96.2	87.1
General Ed.	98.3	98.6	99.2	98.0	97.3	99.4	Y	99.1	94.3
Special Ed.	90.4	67.4	82.4	70.5	69.5	77.6	N	79.4	55.8
LEP	-	-	-	-	-	-	-	55.1	34.4
White	97.3	94.2	97.2	96.2	95.2	97.7	Y	97.4	93.9
Black or African American	75.8	91.4	94.2	83.9	-	88.2	Y	85.7	70.4
Asian	94.6	92.4	100.0	98.4	90.5	96.5	Y	97.1	94.1
Pacific Islander	-	-	-	-	-	-	-	90.9	90.2
Hispanic or Latino	85.7	91.9	78.5	83.8	95.1	96.9	Y	88.4	75.8
American Indian/AK Native	-	-	-	-	-	-	-	88.9	89.9
Other	-	-	-	-	-	-	-	95.5	75.6
Economically Disadvantaged	-	-	-	-	88.5	91.2	Y	81.8	73.0

# HSPA LAL Comparison



# HSPA- Mathematics

TARGET = 74%

Subgroup	% Prof. 2005	% Prof. 2006	% Prof. 2007	% Prof. 2008	% Prof. 2009	% Prof. 2010	AYP Met	DFG	State
Total Students	89.8	91.4	91.3	90.1	90.9	91.5	Y	89.2	74.1
General Ed.	93.9	96.0	95.8	94.0	93.7	96.3	Y	94.9	82.7
Special Ed.	75.6	65.9	64.9	57.4	67.8	53.3	N	54.7	32.7
LEP	-	-	-	-	-	-	-	54.7	33.3
White	92.1	92.3	92.0	92.3	92.8	93.5	Y	91.1	83.7
Black or African American	57.2	85.7	70.6	74.2	-	73.6	N	64.8	46.9
Asian	94.6	98.2	97.7	96.9	93.2	94.7	Y	96.8	91.6
Pacific Islander		-	-	-	-	-	-	90.9	84.1
Hispanic or Latino	77.1	78.4	78.6	64.9	73.2	75.8	Y	74.5	57.9
American Indian/AK Native		-	-	-	-	-	-	76.4	63.3
Other	-	-	-	-	-	-	-	76.6	56.5
Economically Disadvantaged	-	-	-	-	77.7	80.0	Y	65.1	54.0 42



# Class of 2014 NJASK Mathematics Results

		Number of Valid Scores	Advanced Proficient		Proficient		Partially Proficient	
			Number	Percent	Number	Percent	Number	Percent
Grade 8	2010	628	237	37.7%	260	41.4%	131	20.9%
Grade 7	2009	636	189	29.7%	308	48.4%	139	21.9%
Grade 6	2008	623	212	34%	326	52.3%	85	13.6%

\*These numbers do not include APA students.

# CLASS of 2014

## NJ ASK Literacy Results

		Number of Valid Scores	Advanced Proficient		Proficient		Partially Proficient	
			Number	Percent	Number	Percent	Number	Percent
Grade 8	2010	629	212	33.7%	384	61%	42	6.6%
Grade 7	2009	635	182	28.7%	367	57.8%	86	13.5%
Grade 6	2008	621	48	7.7%	452	72.8%	121	19.5%

\*These numbers do not include APA students.

# School Improvement Identification

- Schools that have not made AYP for two consecutive school years in the same content area will be identified as needing school improvement before the beginning of the next school year
- Schools are responsible for improving the academic performance of all students

# School Improvement Process Sanctions

Year	Baseline	Yr. 1	Yr. 2	Yr. 3	Yr. 4	Yr. 5	Yr. 6
Status	Baseline Year	Fail to make AYP	Fail to make AYP	1 <sup>st</sup> year of school impr.	2nd year of school impr.	3 <sup>rd</sup> year of school impr.	4th year of school impr.
Services from District	None	None	None	Tech. Assist.	Tech. Assist	Corr. Action	Restruc.
Parental Choice		None	None	School Choice	School Choice SES	School Choice SES	School Choice SES

# Setting Priorities and Moving Ahead

- **Shift In Paradigm and Philosophy of Curriculum**
- **Raising Student Expectations** (All Courses are CP)
- **Raising Teacher Expectations** (Differentiation, PLC's, etc.)
- **Integration Across All Content Areas**
- **Consistency Across All Grade Levels**
- **Writing Takes Place In All Content Areas** (Core Standards)
- **ASI Restructuring Plan-** (Oversight of Elementary ASI)
- **Curriculum Based Long - Term Planning**
- **Data Driven Decision Making**
- **Design On-going Local Common Assessments**
- **Formative Assessments**

# Setting Priorities and Moving Ahead

- **Focused Instruction**
- **Develop Action Plans with Principals and District Supervisors**
- **Align Staff Development With District Needs**
- **Ongoing Analysis of Testing Data and Data Mining**
- **Vertical Articulation**
- **Learning Connections**
- **Professional Learning Communities**
- **Increased Articulation Between Special Education and Regular Education**
- **Research New Programs to Meet District Needs**
- **Focus on Learning and Thinking**
- **Shift to a Focused Alignment to the NJCCCS and CPI's**

# Setting Priorities and Moving Ahead

- **Community Based Instruction**
- **Teacher Training Based Upon Data Driven Discussions**
- **Integration of Core Standards (Nat'l Standards in Literacy & Mathematics)**
- **Integration of Technology- 21<sup>st</sup> Century Skills**
- **Implementation of ELLIS Software for the ELL Population**
- **ELL Summer Enrichment Program K-12**
- **Development of ELL Parent/Child Education Series**
- **Beginning of RTI Initiative**
- **Fidelity & Integrity of Programs in Place**
- **Development of Remediation Plans in Alignment with State Remediation Mandate**
- **Review of Certificated Staff Evaluation Processes and Instrument**

# Information Regarding AP Course Offerings

<b>Year</b>	<b># Of AP Courses Offered</b>	<b>Total Enrollment (Duplicated Count)</b>	<b>% of Students Enrolled in AP Courses Taking Exam</b>	<b>% of Tests Scoring 3 or Higher</b>
<b>2005-2006</b>	<b>18</b>	<b>785</b>	<b>56%</b>	<b>87%</b>
<b>2006-2007</b>	<b>18</b>	<b>632</b>	<b>64%</b>	<b>82%</b>
<b>2007-2008</b>	<b>18</b>	<b>549</b>	<b>63%</b>	<b>82%</b>
<b>2008-2009</b>	<b>20</b>	<b>658</b>	<b>67%</b>	<b>85%</b>
<b>2009-2010</b>	<b>20</b>	<b>729</b>	<b>63%</b>	<b>90%</b>

# Student Enrollment in AP Courses

Course	2008-2009	2009-2010	2010-2011
Biology	58	49	51
Calculus AB	88	103	105
Calculus BC	16	17	21
Chemistry	21	23	21
Computer Science	3	3	3
English Language	23	43	43
English Literature	80	101	110
European. History	13	28	14
French Language	19	18	22
German. Language	9	6	11
Gov/Pol-US	51	49	38
Italian	35	*	*
Music Theory	5	0 **	0 **
Physics B	12	15	25
Physics C	26	24	13
Psychology	59	90	123
Spanish Language	46	41	49
Statistics	22	23	29
Studio Art	7	5	8
US History	65	91	94
<b>Total</b>	<b>658</b>	<b>729</b>	<b>780</b>

# AP Equity and Excellence

<b>Group</b>	<b>Percentage 2008</b>	<b>Percentage 2009</b>	<b>Percentage 2010</b>
<b>Graduating Class Summary</b>	<b>20.8</b>	<b>26.9</b>	<b>24.6</b>
<b>12<sup>th</sup> Grade</b>	<b>16.1</b>	<b>22.8</b>	<b>21.9</b>
<b>11<sup>th</sup> Grade</b>	<b>11.7</b>	<b>13.2</b>	<b>15.3</b>
<b>10<sup>th</sup> Grade</b>	<b>.2</b>	<b>0</b>	<b>0.5</b>

# Average SAT Scores

<b>Year</b>	<b># of Students Taking SAT</b>	<b>% of Students Taking SAT</b>	<b>Critical Reading Mean (800)</b>	<b>Math Mean (800)</b>	<b>Writing Mean (800)</b>	<b>Total Mean Score (2400)</b>
<b>2006</b>	<b>560</b>	<b>93</b>	<b>529</b>	<b>555</b>	<b>531</b>	<b>1615</b>
<b>2007</b>	<b>529</b>	<b>92</b>	<b>520</b>	<b>550</b>	<b>524</b>	<b>1594</b>
<b>2008</b>	<b>499</b>	<b>90</b>	<b>526</b>	<b>557</b>	<b>528</b>	<b>1611</b>
<b>2009</b>	<b>515</b>	<b>85</b>	<b>549</b>	<b>582</b>	<b>556</b>	<b>1687</b>
<b>2010</b>	<b>448</b>	<b>81.5</b>	<b>539</b>	<b>576</b>	<b>545</b>	<b>1660</b>
<b>New Jersey</b>	<b>84874</b>	<b>-</b>	<b>495</b>	<b>514</b>	<b>497</b>	<b>1506</b>
<b>National</b>	<b>1547990</b>	<b>-</b>	<b>501</b>	<b>516</b>	<b>492</b>	<b>1509</b>

# Alternate High School Assessment (AHSA)

Not about “getting students through”- it is about assuring that all students are prepared for success in their post-secondary lives

# Alternate High School Assessment (AHSA)

**AHSA will be administered locally-**

**there will be three opportunities to complete the Performance Assessment Tasks (PATs) in December, April, July**

**Vendor will recruit, hire, & train scorers- teachers will not score their own students**

**Vendor will report results following each administration window in time to inform graduation requirements**

**ALL students graduated from HHS in June**

**Details for this year: sketchy- training this week**

# Questions/Comments

**Lisa M. Antunes, Ed.D.**  
**908-431-6600 Ext. 2828**  
**[lantunes@hillsborough.k12.nj.us](mailto:lantunes@hillsborough.k12.nj.us)**

